

# ***Economy Bucket***

**Some common uses: Hobby, Small Skidloaders, Compact Tractors**

Part # C-(width) Example: C-60 is a 60" Economy Bucket

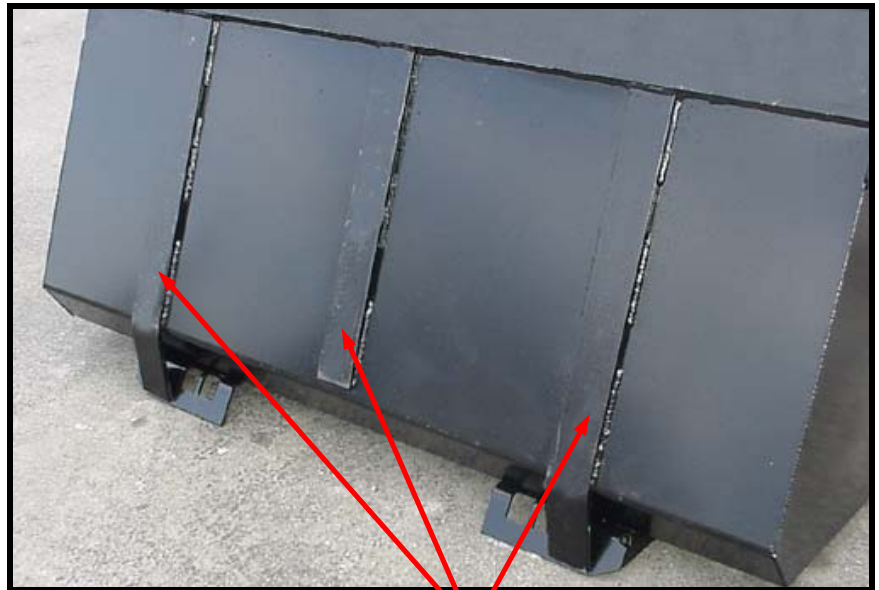
*Recommended for small skidloaders and compact tractors*



## **C-Series**

Berlon's **Economy Buckets** are a lighter, more cost considerate bucket. When you have a light job that needs to be done, the C-Series is the perfect bucket for you. They are available in widths of 54", 60", 66" and 72".

Berlon's **Economy Buckets** feature a 3/4" x 6" cutting edge without holes, three solid wear bars, side cutting edges and a step for easy access into the skidloader. This economically efficient bucket is powder painted black and comes standard with a MPUF-1 mounting plate. The inside of the bucket is formed to allow for easier clean out. This **Economy Bucket** is perfect for the light jobs around the farm, shop or jobsite.

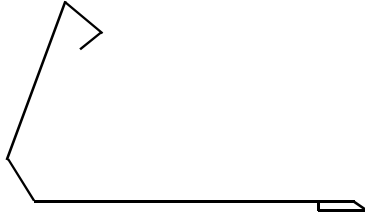


**The Economy Bucket has 3 Wear Bars on the Bottom to Increase the Strength and Life of the Bucket**

Suggested List Price Pg 910-911



# Why a Berlon?



## ECONOMY SERIES C-Series



### 8 MAIN REASONS:

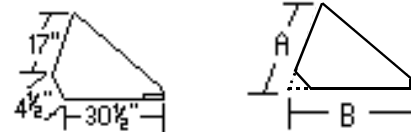
- 2 different options to add to Berlon Buckets, making operators more efficient
- Different mounts to fit your skidloader
- ¾" x 6" cutting edge
- (3) ½" x 3" wear bars
- Light weight
- Inexpensive for used and small skidloaders
- Heavy duty step
- Powder coat paint provides durable & professional finish

### OPTIONS:

Pg 912  
May not be available on all sizes.

- Bolt On Tooth Bar
- Light Duty Weld on Teeth

## Bucket Data



Part #	I.D. Width	O.D. Width	Back Height A	Depth B	Back Angle C	Weight	Heaped Capacity	Dimple Plate	½" x 3" Bars	Steps	Cutting Edge	Holes in Edge
C-54	54"	55"	21"	34.5"	70°	329.5	12.96 Cubic Ft	No	3	1	¾" x 6"	No
C-60	60"	61"	21"	34.5"	70°	349.5	14.44 Cubic Ft	No	3	1	¾" x 6"	No
C-66	66"	67"	21"	34.5"	70°	373.0	15.84 Cubic Ft	No	3	1	¾" x 6"	No
C-72	72"	73"	21"	34.5"	70°	390.5	17.28 Cubic Ft	No	3	1	¾" x 6"	No