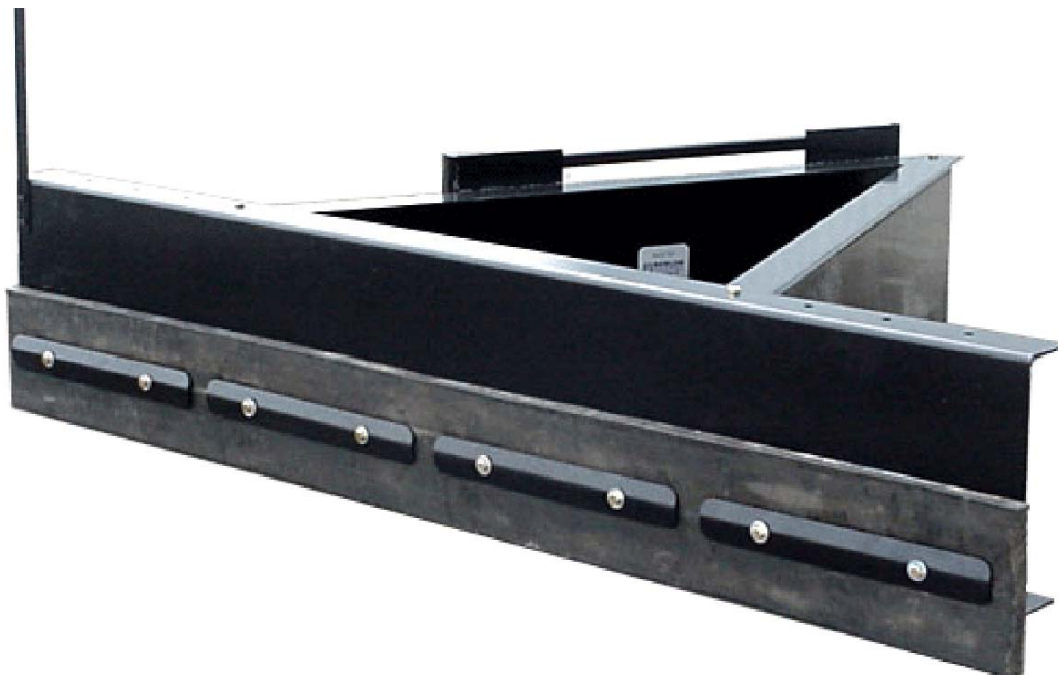
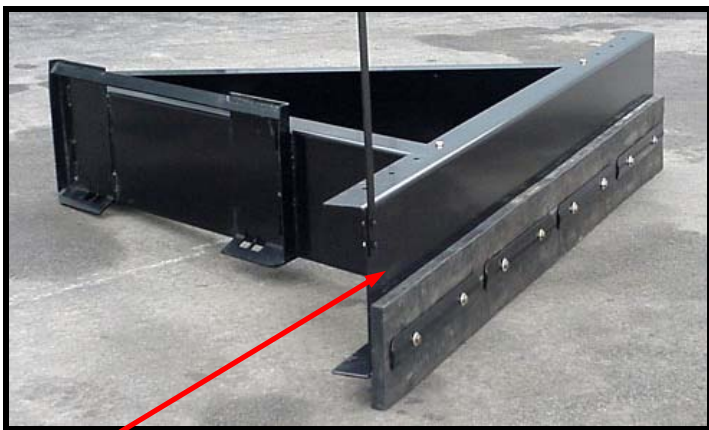


Feed Pusher

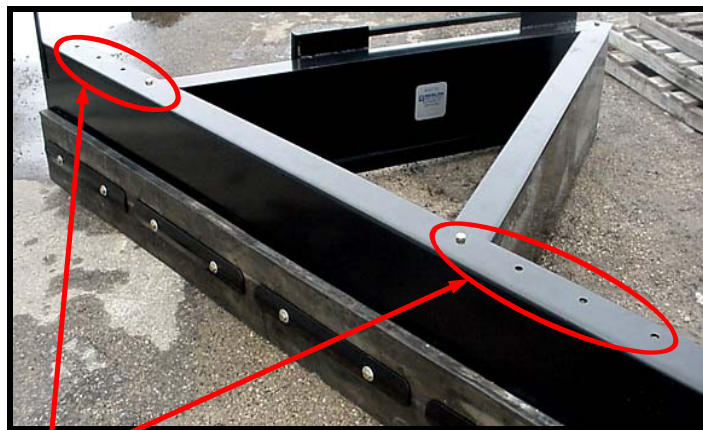
Part # FP



Berlon's **Feed Pusher** is constructed of ¼" steel. The **Feed Pusher** features a 1 ½" x 10" adjustable & reversible full rubber cutting edge, sight guide, multiple angle adjustments, 8' mold board, MPUF-1 mounting plate and comes powder painted black.



The mold board on Berlon's **Feed Pusher** extends past the tires of the skidloader to prevent driving over the feed and crushing it. This also prevents the residue on the tires from getting into the feed.



Berlon's **Feed Pusher** has 16 different angle adjustments.