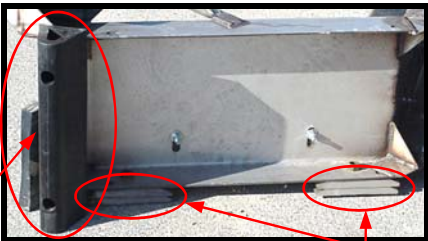


# Manure Scraper

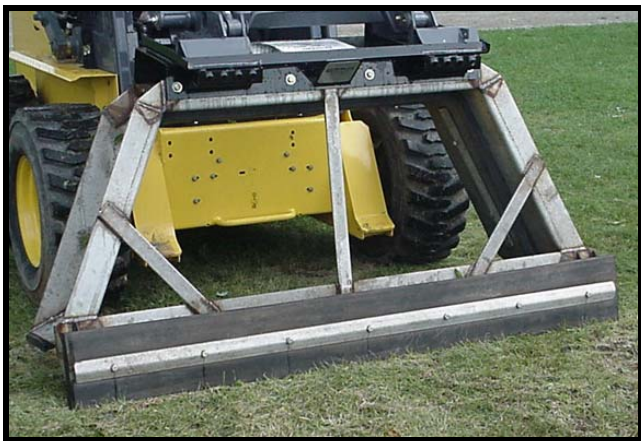
Part # MS

## ADVANTAGES OF A BERLON MANURE SCRAPER

- *Better Visibility*
- *Unlike a tire scraper, this unit does not have a top which increases capacity and does not have a spot for the manure to freeze onto.*
- *This unit is lighter in weight, reducing the stress on booms, boom pins, and cylinders.*
- *Berlon's stainless steel **Manure Scraper** is more compact so it takes up less room and is easier to turn around.*
- *All surfaces that come in contact with manure are made of type 304 stainless steel, which is the same type used in milking equipment.*



**BUMPERS OPTIONAL. SHOES STANDARD.**



The **Stainless Steel Manure Scraper** can be used in two different positions. The multiple edge design is used to push or pull material.

## **IMPORTANT!!**

- When ordering, Berlon must know what machine it is going on.
- **Berlon's Manure Scraper** is designed for experienced operators.
- **If an operator hits something at a high rate of speed, damage may occur to gates, manure scraper or even the operator.**
- Barn floor must be relatively level from curb to curb. This manure scraper does not have the give that old tire scrapers have. Since it is much more rigid than tire scrapers, it will do a much better job of shearing frozen manure.

Built out of stainless steel, Berlon's **Manure Scraper** features adjustable & reversible, replaceable rubber edges. The dual edges can be used for pushing or pulling of animal or material residue. These rubber edges allow for contact surfaces and maximum life in rough applications. The stainless design of the **Manure Scraper** resists corrosion and allows for easy clean up. It comes standard with a MPUF-1 mounting plate and is available in 6 Ft, 7 Ft and 8 Ft widths.

Suggested List Price Pg 957