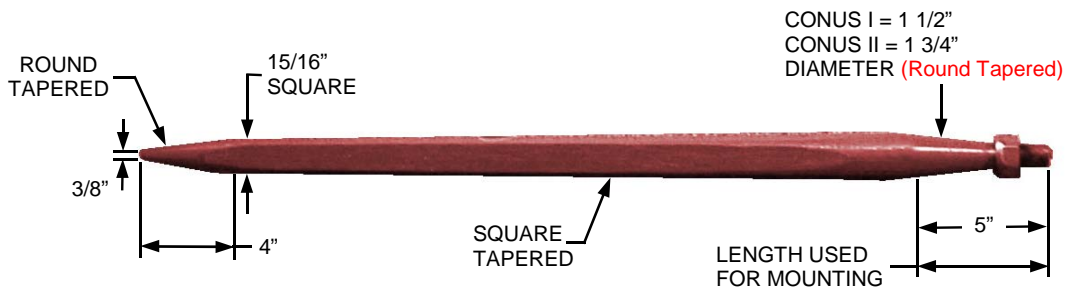


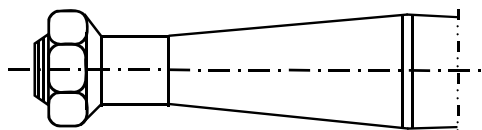
Conus Tines & Sleeves



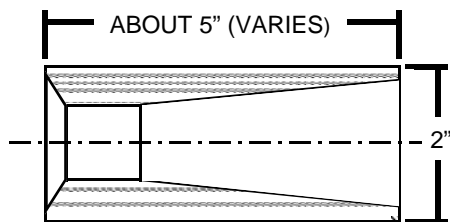
Berlon offers a variety of different length tines to help customize your attachment to your needs. This unique 4 sided tapered design enables tines to slip into and retract from dense bales easily.

Important:

Tines must be kept tight (between 285 and 315 Ft/Lbs) & tightened periodically. The tines will not be covered under warranty if they break by the nut which is an indication they were not kept tight.



Tapered Tine Shaft



Receiver Sleeve for Conus Tines

Tine length is measured from end to end. Some length will be lost in the sleeve.

Conus I		
Part No:	Length:	Weight:
C1T-324	32.4"	9.5 Lbs
C1T-400	40.0"	10.5 Lbs

Conus II		
Part No:	Length:	Weight:
C2T-324	32.4"	13.0 Lbs
C2T-440	44.0"	15.5 Lbs
C2T-490	49.0"	17.5 Lbs



The Sleeve is tapered inside to ensure proper fit. The small end is countersunk for the nut.

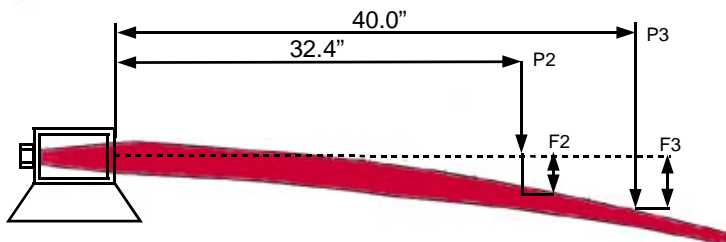
Note: Some tine length is lost in the sleeve!



Conus I



Conus II



Typical Values			
Distance from the Mounting Tube		Max Load for # Permanent Set	Deflection
Conus 1	32.4"	P2= 1348 Lbs	5.6"
	40.0"	P3= 1079 Lbs	8.6"

Suggested List Price Pg 952